

City Integrated Commissioning Board
Meeting in-common of the
City and Hackney Clinical
Commissioning Group and the City of
London Corporation

Hackney Integrated Commissioning Board
Meeting in-common of the
City and Hackney Clinical
Commissioning Group and the London
Borough of Hackney

City & Hackney Local Outbreak Board

**Joint Meeting in public of the two Integrated Commissioning Boards and the
Community Services Development Board on
Thursday 10 December
09:00-09.50
Microsoft Teams**

[Click here to join the meeting](#)

Chair – Cllr Christopher Kennedy

Item no.	Item	Lead and purpose	Documentation type	Page No.	Time
1.	Welcome, introductions and apologies	Chair	Verbal	-	09:00
2.	Declarations of Interests	Chair <i>For noting</i>	Paper	-	
3.	Minutes of the previous meeting	Chair <i>For approval</i>	Paper		
4.	Questions from the Public	Chair	None	-	
5.	Papers for discussion <ul style="list-style-type: none"> Update on Covid-19 Scenario Planning (verbal) Local Outbreak Control Plan Covid-19 Data Intelligence Report 	Chair <i>For noting</i>	Papers	6-20 21-28	

Date of next meeting:

14 January, Format TBC

Meeting-in-common of the Hackney Integrated Commissioning Board
(Comprising the City & Hackney CCG Integrated Commissioning Committee and the London Borough of Hackney Integrated Commissioning Committee)

and

Meeting-in-common of the City Integrated Commissioning Board
(Comprising the City & Hackney CCG Integrated Commissioning Committee and the City of London Corporation Integrated Commissioning Committee)

and

Community Services Development Board
(Comprising system colleagues from across the City & Hackney geographic area)

Integrated Commissioning Board – Local Outbreak Board Session

Minutes of meeting held in public on 12 November 2020
Microsoft Teams

Present:

Hackney Integrated Commissioning Board

Hackney Integrated Commissioning Committee

Cllr Christopher Kennedy	Cabinet Member for Health, Adult Social Care and Leisure (ICB Chair)	London Borough of Hackney
Cllr Susan Fajana-Thomas	Cabinet Member for Community Safety	London Borough of Hackney
Cllr Rebecca Rennison	Cabinet Member for Finance, Housing Needs and Supply	London Borough of Hackney

City & Hackney CCG Integrated Commissioning Committee

Dr. Mark Rickets	Chair	City & Hackney CCG
David Maher	Managing Director	City & Hackney CCG
Honor Rhodes	Governing Body Lay member	City & Hackney CCG

City Integrated Commissioning Board

City Integrated Commissioning Committee

Randall Anderson QC	Chairman, Community and Children's Services Committee	City of London Corporation
Helen Fentimen	Member, Community & Children's Services Committee	City of London Corporation
Marianne Fredericks	Member, Community and Children's Services Committee	City of London Corporation

In attendance

Alex Harris	Integrated Commissioning Governance Manager	City & Hackney CCG
Alice Beard	Communications Manager	City & Hackney CCG

Anne Canning	Group Director – Children, Adults and Community Health	London Borough of Hackney
Chris Lovitt	Deputy Director of Public Health	London Borough of Hackney
Denise D’Souza	Director of Adult Social Care	London Borough of Hackney
Diana Divajeva	Principal Public Health Analyst	London Borough of Hackney
Eeva Huoviala	Head of Engagement	City & Hackney CCG
Henry Black	CFO	NE London Commissioning Alliance
Ian Williams	Group Director, Finance and Corporate Services	London Borough of Hackney
Jake Ferguson	Chief Executive Officer	Hackney Council for Voluntary Services
Jonathan McShane	Integrated Care Convenor	City & Hackney CCG
Jon Williams	Executive Director	Healthwatch Hackney
Matthew Knell	Head of Governance & Assurance	City & Hackney CCG
Kat Buckley	Senior Commissioning Officer: Learning Disabilities	London Borough of Hackney
Nina Griffith	Workstream Director: Unplanned Care	City & Hackney CCG
Paul Coles	General Manager	Healthwatch City of London
Simon Cribbens	Deputy Director, Community and Childrens’ Services	City of London Corporation
Siobhan Harper	Workstream Director: Planned Care	City & Hackney CCG
Stella Okonkwo	Integrated Commissioning Programme Manager	City & Hackney CCG

Members of the public were also present on the call, though are not named here for privacy reasons.

1. Welcome, Introductions and Apologies for Absence

- 1.1. The ICB for the first 50 minutes was operating in its capacity as the Local Outbreak Board.
- 1.2. Apologies were noted as listed above.

2. Declarations of Interests

- 2.1. The **City Integrated Commissioning Board**
 - **NOTED** the Register of Interests.

2.2. The **Hackney Integrated Commissioning Board**

- **NOTED** the Register of Interests.

3. **Questions from the Public**

- 3.1. There were no questions from members of the public.

4. **Covid-19 Update**

- 4.1. The Chair agreed that all items could be presented a singular covid-19 update. Chris Lovitt introduced the item. There had been some encouraging signs in relation to the Covid-19 infection rates, which were not currently increasing at the exponential rate seen previously. Access to testing was increasing.
- 4.2. New announcements were coming along very quickly. The introduction of rapid-result / lateral flow testing was welcome, however the license did not currently enable self-administration, so the roll-out of this required infrastructure to be put in place.
- 4.3. There would also be a booking system available for symptomatic individuals so that they could book a test. This would be targeted at the most vulnerable residents, and also potentially teachers.
- 4.4. The news of the Pfizer / Biotech vaccine was welcome however the main logistical hurdle with this vaccine was the requirement to keep a cold chain. There was also no current list of prioritization for who would receive the vaccine. However, we wanted to ensure that frontline staff were some of the first to be vaccinated. It was expected that there would be some vaccinations this year but the majority would be next year due to logistical challenges.
- 4.5. Diana Divajeva also added that incidence and infection rates had been going down and the rates were just below the London average. Testing rates had dropped over the past week however this may just be a normal fluctuation and not necessarily a cause for concern. The positivity rate had dropped which may reflect a reduction in virus circulating in the community.
- 4.6. Cases were no longer mostly concentrated in the north of the borough and were instead well-distributed throughout. There had in fact been a slight reduction in cases in the north of the borough. Most cases were also household clusters.
- 4.7. The main ethnic group represented in the figures were those who listed their ethnicity as "other" – interpretation of what this means was largely speculative, however it could reflect the Charedi community in Hackney.
- 4.8. Randall Anderson asked how situations were identified. Diana Divajeva responded that people would notify the London Coronavirus Response Centre about any positive cases within their institutions. Ideally, they would also notify the single point of contact in the local authority. The local authority would then get a notification when somebody had tested positive.
- 4.9. Chris Lovitt added that we had gotten our local contact tracing system up to the point where it was having a significant impact on control of the virus. However, contact tracing was very time-sensitive and there had been some situations where people had only contacted the local authority more than one week after testing positive.

- 4.10. In response to a question from the public, Chris Lovitt explained that there had been some limited situations where test results had taken 7 days to be received but this was an outlier. Most results were within the 48-72 hour period.
- 4.11. Self-administered tests were generally accurate – and if a sufficient sample was not received from a self-administered test, it would be reflected in the result.
- 4.12. Marianne Fredericks asked about safety and security at the testing centres. Chris Lovitt responded that there were security guards who assisted with management in the testing centres. Police were also informed as to testing site locations. There were ways for managers to raise concerns if there had been crowds, demonstrations, etc. but so far this hadn't happened.
- 4.13. The City Integrated Commissioning Board
- **NOTED** the report.
- 4.14. The Hackney Integrated Commissioning Board
- **NOTED** the report.

Title of report:	COVID-19 Local Outbreak Control Plan update
Date of meeting:	10 December 2020
Lead Officer:	Sandra Husbands, Director of Public Health
Author:	Kiran Rao, LOCP Senior Project Manager
Committee(s):	Local Outbreak Control Board
Public / Non-public	Public

Executive Summary:

The purpose of the report is to provide a summary of key areas of development/progress in relation to the Local Outbreak Control Plan. This paper therefore provides a summary of considerations in relation to:

- testing
- local contact tracing
- care settings
- schools and educational settings
- Hackney Incident Management Team meetings
- community grants and community champions programme
- communications
- outbreak management planning
- standard operating procedures
- finance

Recommendations:

The **City and Hackney Local Outbreak Control Board** is asked to **NOTE** the report

The **City Integrated Commissioning Board** is asked:

- To **NOTE** the report;

The **Hackney Integrated Commissioning Board** is asked:

- To **NOTE** the report;

Strategic Objectives this paper supports [Please check box including brief statement]:

Deliver a shift in resource and focus to prevention to improve the long term health and wellbeing of local people and address health inequalities		
Deliver proactive community based care closer to home and outside of institutional settings where appropriate		
Ensure we maintain financial balance as a system and achieve our financial plans		
Deliver integrated care which meets the physical, mental health and social needs of our diverse communities	<input checked="" type="checkbox"/>	Working collaboratively across the whole system, including the community and voluntary sector (and with local businesses) to respond to the local impact of the Coronavirus pandemic
Empower patients and residents	<input checked="" type="checkbox"/>	Empowering patients, residents, communities and staff with knowledge and understanding about how to reduce the risk of COVID-19, prevent/reduce the spread of infection and how to respond in the event of a possible/suspected outbreak

Specific implications for City

Information is contained in the main report

Specific implications for Hackney

Information is contained in the main report

Patient and Public Involvement and Impact:

Local contact tracing: Patients are called for contact tracing purposes but also to connect them with the Welfare Line if needed. This can help support on a range of issues that might make maintaining isolation difficult or impossible, especially for vulnerable or socially isolated individuals. Information on other areas is contained in the main report

Clinical/practitioner input and engagement:

The public health team is providing extensive support via the COVID-19 inbox (Monday to Friday) which provides consultant support when needed, Local contact tracing receives support 7 days a week and working groups have clinical/practitioner input.

Information on other areas is contained in the main report

Communications and engagement:

Communications continue to focus on meeting the objectives of the LOCP- in particular, preventing and mitigating the spread of COVID-19 to save lives, communicating openly and honestly with key stakeholders, and working with the community to develop capacity to support testing and contact tracing locally. This includes the continued reinforcement of the prevention messages 'hands, face, space' on various channels, amplifying government messages and supporting the work of the GLA and London Councils. In addition, there is ongoing work on specific communications related to key areas of work, with key stakeholders, including the public, care homes and local contact tracing teams.

Equalities implications and impact on priority groups:

Local contact tracing: COVID-19 is understood to have disproportionately frequent and severe effects on specific high risk groups, who may be the least likely to be contacted by the national NHS Test and Trace team. The local service offers an opportunity to address this inequality both directly, by contacting harder to reach individuals at higher risk, and indirectly by contributing to the national and global fight against the virus.

The Community Champions work and COVID-19 Grant Information programme is targeted at key communities and priority groups.

Safeguarding implications:

All contact tracing staff undertake mandatory safeguarding training, before being able to access the national database to make calls.

Impact on / Overlap with Existing Services:

Information is contained in the main report

MAIN REPORT

UPDATE AGAINST KEY AREAS OF THE LOCAL OUTBREAK CONTROL PLAN

TESTING

Symptomatic Testing

There continues to be a decrease in the number of people booking Covid tests through the national system for Local Testing Sites (LTS). These sites are open 7 days a week, 8am to 8pm. Across all three Hackney LTSs and in the City Guildhall Yard site, the most recent data shows a reduction in site utilisation ranging from 30% to 56%. This is in stark contrast to the site utilization being seen in October, at that time the Bentley Road LTS recorded a fairly stable site utilization of 98%. Numbers notably drop on Saturday and Sunday. The City and Hackney communications teams are looking at adapting their current testing messages to increase awareness of the weekend opening hours of these LTSs. Mobile Testing Units (MTUs) continue to operate on a rolling rota (one or two days a week) and are drive-through only. Here, the numbers of people testing at the two MTUs situated in Hackney remain stable. There has been a small increase in the number of people ordering home testing kits in both Hackney and the City, which may be in response to lockdown restrictions, colder weather, or both.

Asymptomatic Testing

Rapid asymptomatic testing pilots using the Innova Lateral Flow test (LFT) kits are in the planning stages at present. LFTs are antigen tests involving a nasal and throat swab to which a reagent can be used without lab based procedures, with results of positive, negative or invalid test being given in 30 minutes. The suggested regimen for asymptomatic testing is twice a week, every 3 or 4 days.

The value and role of asymptomatic testing needs to be better understood. In addition to this, the implementation of some pilots may result in use of the Innova test kit which is outside of the manufacturer's instructions. The Medicines and Healthcare products Regulatory Agency (MHRA) has provided guidance to mitigate any risk to patient safety and all pilots are required to adhere to an end to end process, as set out in a nationally approved clinical standard operating procedure (SOP). In order to comply with the clinical SOP, in Hackney we are planning to implement LFT pilots in areas that already have some of the required infrastructure. These are older people's nursing homes and supported living settings for people with learning disabilities and mental health conditions. In the City we are planning a LFT pilot with the homeless outreach services, working with vulnerable rough sleepers and also with frontline adult social care staff. Again, these are both areas in which implementation is facilitated by existing infrastructure and/or staff capacity.

In Hackney the GP Confederation swabbing service will be trained in using the LFTs to ensure quality assurance throughout the pilot.

Local Booking

Recently, directors of public health have been able to take control of local booking of some symptomatic testing - using PCT tests - via local testing stations. Up to 50 slots per LTS per day are available for local booking. In Hackney there are 3 LTSs and the City has 1 LTS.

In Hackney we are developing a simple, light touch booking system for residents and Hackney front line workers to book tests across the sites within a 48 hour window. The aim is to work with Community Champions and the Faith Forum to reach out to communities who may struggle to navigate or engage with the national online system. A similar system is being developed in the City for their frontline workers. Discussions are beginning about the potential of joining up the booking system.

Care homes and non CQC registered care settings

There are ongoing issues with access to tests through the national offer due to a shortage of Roche reagent. The commissioned GP Confederation swabbing service are supporting care settings to access tests via local NEL routes, bypassing the national offer.

The national antibody testing offer for social care staff implemented locally by NEL has now ended. Low uptake rates were observed for Hackney and the City; this may have been due to the location of testing facilities outside of the borough. A new national offer for those working in adult social care is now available. This is in the form of a home antibody test similar to the PCR swab test process through pillar 2. The offer has been promoted widely to staff and providers with the support of LBH Adult Social Care. There is a new offer for antibody testing as part of a research study. The offer has been forwarded to all care settings.

LOCAL CONTACT TRACING SERVICE

Local contact tracing has now been running for around eight weeks and the systems and processes have bedded in, with the service running with a high level of independence through the customer service team managers and call handlers in Hackney and the environmental health officers in the City. Close support is provided by Public Health. Currently the Hackney team have received 1018 cases, with 443 successfully completed on the national database; 7 out of 13 have been completed for the City of London. The team initially trained have delivered the service under a high level of demand that we did not initially expect. In recent weeks, we have recruited two individuals to work on the service full time, with our original team covering out of hours.



As numbers of cases reduce, we aim to develop a more integrated team between contact tracing, environmental health, and public health.

Recent work on the service has focused on the development of a new IT system, funding being signed off through the Health Protection Board. This aims to integrate contact tracing alongside other elements of support provided by Hackney - this has rapidly proved beneficial, as MHCLG instructions to resume support for Clinically Extremely Vulnerable (CEV) residents were given in early November. Rapid development of the tool allowed its use to reach over 500 residents; around two thirds were contacted, with a quarter of those needing support, mainly accessing food.

CARE SETTINGS

Visiting

A localised care home visiting policy was developed, based on national guidance. Until lockdown the public health team continued to send weekly updates to all care settings, including weekly analysis of outbreaks in care homes at ward level, to inform a local dynamic risk assessment. This was designed to inform decisions around visiting in care settings. However, the move into a national lockdown meant that all visiting was stopped, with the exception of end of life situations.

A senior high court judge has ruled that despite national government guidelines it is legal for families to visit their loved ones in care homes. New guidance on visiting in care homes has been published and settings will be supported locally to interpret and adhere to the adjusted guidance. Lateral flow testing is likely to be able to support care settings to open up to visitors and a national pilot is underway. Two Hackney care homes are included in the pilot.

When the national lockdown ends on 2 December and London goes into Tier 2/High Alert, care home visits will be permitted with special COVID-secure precautions.

Influenza (flu) Vaccination

The national flu vaccination programme for older people in CQC registered care homes is being delivered this season by community pharmacists, who have already begun to deliver them. There are currently no similar arrangements for other care settings, other than staff encouraging residents to get their vaccinations through their GPs or by visiting a community pharmacist. The uptake of flu vaccination is around 74% in care homes. An emerging issue has been the refusal of care home staff to have flu vaccination with the

uptake only at 19%. Work is being done by the communications team on myth busting, to address some of the rumours circulating on social media.

Risk Register

A risk register for care settings has been developed and will support reporting to the Health Protection Board on progress around infection prevention and control (IPC) work in care settings.

Infection Prevention and Control

An assessment of IPC need is currently underway and is being led by the CCG. There are some concerns about the effectiveness of current IPC measures in certain care settings and a proposal for increased infection control support is being developed. The Care Homes Working group has developed an audit of care settings' current position around access to testing, IPC measures, access to personal protective equipment (PPE), visiting, flu vaccinations and other COVID-19 related matters of concern. Responses will help to inform future SOP updates. The CQC and non-CQC SOPs have been updated and published on Hackney and the City's website.

SCHOOLS

The education settings SOP has been updated and is being widely used across educational settings in Hackney and the City. Schools are being closely supported with suspected and confirmed cases by Hackney Education (HE), the City of London Department of Community and Children's Services (DCCS) and Public Health, with appropriate IPC advice.

A COVID-19 schools database is being kept by City and Hackney Public Health Team to enable outbreaks to be recorded and monitored. Following legal advice, an agreement has now been reached around the naming of schools where cases have been confirmed, with one list of all affected schools published alongside the relevant COVID data. The agreed protocol for sharing includes the caveat that schools will be named where there are three schools or more affected, in the future event of two or fewer schools being affected, only the category of school i.e. primary or secondary, will be shared.

Field visits have been conducted by Public Health to certain schools, for the purposes of support and assurance. In addition, Public Health attends weekly staff forums and attended a termly head teachers' briefing to present updates on local COVID intelligence, the SOP, IPC advice and to provide general assurance around support and advice available via the Public Health testandtrace@hackney.gov.uk email enquiry and support service.

HACKNEY INCIDENT MANAGEMENT TEAM (IMT) MEETINGS

An incident management team (IMT) is a time-limited working group, convened to provide strategic direction; coordination between agencies; and external assurance, in order to address outbreaks of COVID-19. Two IMTs have taken place over this period.

North Hackney IMT

The IMT for the COVID-19 outbreak affecting the communities in Stamford Hill and Seven Sisters is coordinating action between Haringey and Hackney, with the support of Public Health England (PHE). The group has met every 2 weeks since it was first convened on 21 July.

Key issues for discussion between the two boroughs are as follows:

- understanding and comparison of local epidemiology
- location of testing sites in both boroughs to ensure that there is good coverage by both location and days of the week
- joint communications on reducing the risk of coronavirus
- measures to ensure safe private prayer in places of worship and the challenges around working with a large number of private, unregistered educational settings

COMMUNITY GRANTS AND COMMUNITY CHAMPIONS PROGRAMME

Community Champions Programme

57 Public Health Community Champions have been recruited and trained in *Making Every Contact Count*, key messages about COVID-19 and safe volunteer practice. They are based in 27 different organisations in Hackney. The training sessions are fortnightly, and there are two more booked before the end of the year, with 22 attendees signed up across these sessions. There are currently no Champions in the City of London. However, efforts are underway with City communication leads to actively promote this opportunity as much as possible.

The organisations we are working with serve a wide range of local residents who may be classed as 'high risk', 'vulnerable' or may be disproportionately affected by COVID-19. These include communities with specific cultural/ religious considerations, those with



language needs, people experiencing digital poverty, those socially isolated, the homeless, serious mental illness, learning disabilities and the Black African and Caribbean communities.

Monthly forums provide valuable insight and inform development. Feedback to date has included the need for clear COVID-19 guidance information, misunderstanding of how households form bubbles and support available for clinically extremely vulnerable residents. December's Forum will focus on the new tiered system and the support available for residents during the winter season. There is also planning underway to determine how the Champions can gain detailed insight and support local efforts on the uptake of the COVID-19 vaccine.

Covid-19 Information Grants

This grant programme aims to target organisations that work across Hackney and the City, supporting diverse community groups, including people disproportionately affected by COVID-19. 43 applications were received from the first round grant programme, and offer letters are being finalised. All successful organisations will be required to train at least one volunteer or staff member and engage in the monthly Community Champions forum.

COMMUNICATIONS

Communications continue to focus on meeting the objectives of the LOCP, in particular, preventing and mitigating the spread of COVID-19 to save lives, communicating openly and honestly with key stakeholders, and working with the community to develop capacity to support testing and contact tracing locally. This includes the continued reinforcement of the prevention messages 'hands, face, space' on various channels, amplifying government messages, and supporting the work of the GLA and London Councils.

Recent COVID-19 communications from the City Corporation this month includes:

- A news release was issued in response to the Government's COVID-19 Winter Plan 23rd November
- A news release was issued in response to the Government's decision on Tier systems on 26th November
- Further information about the testing centre in Guildhall Yard was communicated to residents and businesses and on social media;
- Social media to highlight the importance of 'supporting each other' during the coronavirus pandemic and getting your flu vaccination if you are eligible
- A letter to all residents from the Policy Chair and Lord Mayor in December reinforcing public health messages and London's new Tier Level.



- A wraparound on the City Matters newspaper is going out to all residents and businesses in December
- Policy Chair's column in City Matters reinforcing public health messages and support to the City's businesses.
- Lord Mayor's column in City AM reinforcing public health messages and supporting businesses under the new tiered restrictions in December
- The placement of correx boards is underway across the City to highlight the importance of 'hands, face, space'

Recent COVID-19 communications from Hackney this month includes:

- Media coverage across 17 digital, print and radio platforms including national coverage; Radio 4, Daily Mail, The Guardian and The Times
- 4 blog posts from Dr. Husbands and the Mayor
- Printed one commentary piece written by Dr. Husbands for the Hackney Citizen
- Second lockdown related: A leaflet sent to all homes in Cazenove, Springfield and Stamford Hill wards where they experience high levels of digital exclusion
- 3 page content in Hackney Life sent to all homes in Hackney
- Adverts placed in the Orthodox Jewish press
- A community partner video with Dr. Davis at Homerton Hospital sent via social media, to Orthodox Jewish community contacts and to the Police to distribute via their communication channels.
- 'Hands, face, space' merchandise is being distributed via the Police to the Orthodox Jewish community and to homeless people via the Greenhouse, as well as to shoppers on Dalston high street where reports were received of low mask wearing.
- 500 Hand sanitizers are being distributed and 100 'space' floor decals are being put around the Town Hall campus and on market streets to encourage social distancing

Hackney Council's #KeepStamfordHillSafe Covid-19 communications campaign won an LGCommunications award in the diversity category. This was covered in the Jewish Chronicle, "the world's oldest and most influential Jewish newspaper".

OUTBREAK MANAGEMENT PLANNING SCENARIO EXERCISES

A second virtual scenario exercise was completed on 5 November. The theme focused on the NHS, health care sector and the winter season. A report was taken to AOG and feedback on resulting actions will be provided verbally.



Feedback from participants was positive:

'It was frighteningly realistic and focused our minds'

'It was important to look at the wider system issues and for me certainly brought to the fore the issues facing social care with COVID and winter. It will now be interesting to see how SOC responds to plans and opportunities to work better and more systematically on some of the delivery issues.'

STANDARD OPERATING PROCEDURES (SOPs)

SOPs are being reviewed at pace to make 17 published SOPs more concise and user friendly with the aim to improve access and use. There are also improvements to the coronavirus webpages for [Hackney](#) and the [City of London Corporation](#).

Based on feedback from high risk settings complementary resources are also in development. This includes a poster for GP practices for staff to better understand how they can get tested and subsequent actions for the individual, workforce, household and support bubble. We're also developing a poster for GP practice managers to support them to manage an outbreak better. Other resources include postcards in development for the hospitality sector. A new SOP is also in development for acute trusts. Monthly single point of contact meetings inform development and provide a valuable opportunity to consult sector specialists.

FINANCE

The total projected spend for the Track and Trace programme is now standing at £1.87m, compared to the previous reported position of £1.86m. The only finance item is approval for COVID counselling of £7,140.

Supporting Papers and Evidence:

See appendix A

Appendix A - Finance Summary

Item	Expenditure Type:	Description	2020/21 Cost	2021/22 Cost	Total Cost	Comments
1	Staffing Resources	Programme Manager - assignment commenced in July 2020)	£90,000		£90,000	Post assumed till the end of the financial year. The cost should be split 80:20 (Hackney:Col)
2	Staffing Resources	PH Consultant (1 year fixed term contract)	£117,074	£39,025	£156,098	Commences on 1st July 20 to 30th June 21. The cost should be split 80:20 (Hackney:Col)
3	Pan- London Outreach Testing - ADPH London	Pan-London Outreach Testing - ADPH London	£13,755		£13,755	Agreed expenditure
4	VCS Test & Trace Programme	VCS Test and Trace Programme	£389,725	£278,375	£668,100	
5	IT Software	Tableau software platform for COVID dashboard	£17,000	£17,000	£34,000	Purchased
6	Communication Costs	Bereavement leaflet for frontline workers	£1,340		£1,340	
7	Community Covid Helpline - Bikor Cholim	Community Covid helpline - Bikur Cholim (3 months)	£7,000		£7,000	It was agreed by the Board on 17 August 2020 with some appropriate KPIs to be developed by the service.
8	Staffing Resources	Keep London Safe Programme (Campaign Manager)	£2,756		£2,756	

9	Staffing Resources	Customers Services cost agreed for 6 months	£52,000		£52,000	£52k Customers Services cost agreed for 6 months (£1,968 per week)
10	Communication Costs	Covid Communication Plan	£33,000		£33,000	Covid Communication Plan - £33k agreed
11	Communication Costs	Further communications work (internal) £10k.	£10,000		£10,000	Further communications work (internal) for £10k.
12	Critical Response Team (CRT)	Critical Response Team (CRT)	£90,000		£90,000	Start date 1st October 20-31st March 21 (Agreed on 21st Sept 20)
13	Covid Awareness - Interlink	Funding for COVID awareness work - Interlink	£22,500		£22,500	
14	Emergency Support - External Care provision	Emergency support over the weekend - Electcare Health	£8,100		£8,100	Agreed on 5th October 20 by HPB
15	Welfare Support to Support Self Isolation	Welfare support to support self isolation	£120,000		£120,000	Agreed on 5th October 20 by HPB
16	Covid 19 Testing	Covid 19 testing	£5,000		£5,000	With the Find and Treat Team - we are the funder of last resort if the Home Office does not pick up the funding.
17	Local Contact Tracing Proposal	Local Contact Tracing Proposal	£28,752		£28,752	Agreed by Health Protection Board - There may not be a requirement if staff can be recruited from the redeployment pool (x2 FTE Sc6 for 6

						months)
18	Communication Costs	City and Hackney Coronavirus New Normal Budget (Further communication for residents & businesses)	£46,000		£46,000	Agreed by Health Protection Board on 26th October 2020 (£30k LBH, £16k CoL)
19	Staffing Resources	Tableau Data Manager post x1 PO5 for 6 mths	£24,227	£4,405	£28,632	Agreed by Health Protection Board on 5th October 2020 (6 months forecast)
20	Community Covid Helpline - Bikor Cholim	Community Covid helpline - Bikur Cholim additional grant	£15,749		£15,749	Helpline adviser's costs for 20 weeks for £11,049 and Communications from August 20 to December 20 for £4,700
21	IT Software	Coronavirus Call Handling Software	£120,000		£120,000	Agreed by Health protection board on 2nd November 2020 (15 weeks).
22	Staffing Resources	Administrative support (forecast is for 3XSc5) for 6 mths	£44,860	£8,972	£53,832	Admin 1: To provide dedicated and full time support to co-ordinate and report on the lifecycle of IMT meetings Admin 2 & 3: To help with day to day tasks and work flexibly on a full time basis over the next 6 months. Excellent organisational, administrative and design skills needed.
23	Staffing Resources	Senior Public Health Specialist: Health Protection Lead 1XPO10 for 6 mths	£32,584	£6,517	£39,101	Oversight of outbreak control plan delivery, leading operational work and proposing strategic approaches for a minimum of 6 months.
24	Staffing Resources	Project Manager 1XPO7 for 12 mths	£29,048	£40,668	£69,716	Management of contracts/relationships for Covid response, lead on testing and community

						engagement for 12 months
25	Staffing Resources	Senior Public Health Specialist: Communications 1XPO7 for 6 mths	£29,048	£5,810	£34,858	Strategic oversight of communications across all LOCP workstreams. This role will oversee the work of PH comms officers, ensuring a good engagement strategy is delivered for SOPs across City and Hackney for a minimum of 6 months.
26	Staffing Resources	Senior Public Health Specialist: IPC/Health Protection 1XPO7 for 6 mths	£29,048	£5,810	£34,858	Technical input on infection prevention control to priority settings/partners.
27	City Matters for Covid 19 Wrap Around	City Matters for Covid 19 Wrap Around	£16,000		£16,000	Committed and agreed
28	Other commitments - City of London	Other commitments - City of London	£65,264		£65,264	Plans in development, awaiting further details
29	Group Session Counselling – Covid team support	Group Session Counselling – Covid team support	£7,140	£0	£7,140	This was agreed at HPB on 16th Nov 20
Total:			£1,466,971	£406,580	£1,873,551	

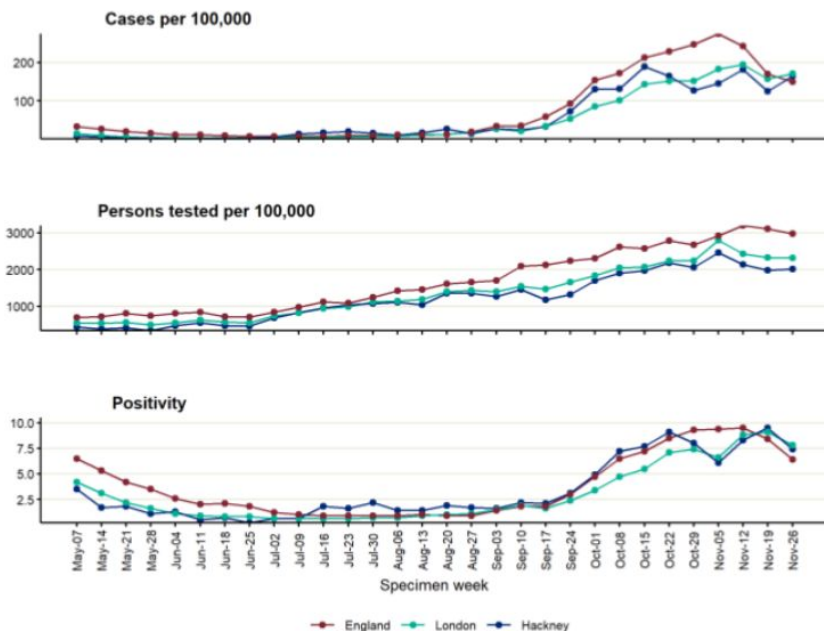
COVID-19 update to the Local Outbreak Control Board

Prepared by the City and Hackney Public Health Team 9 December 2020

For up-to-date figures please see <https://hackney.gov.uk/coronavirus-data>

Hackney's is currently recording a COVID-19 incidence rate similar to both the London and England average

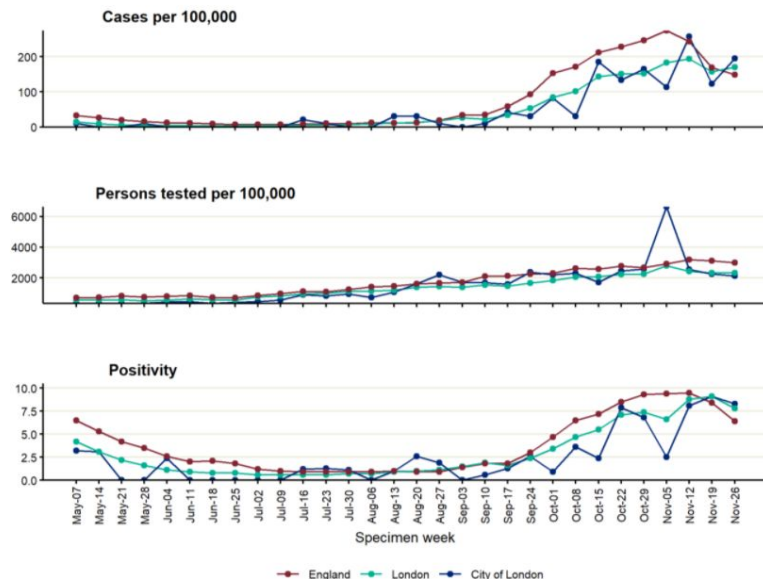
Incidence, testing and positivity rates in Hackney, by specimen date (May 5 to December 2 2020)*



- Compared with the previous week, Hackney COVID-19 incidence has increased by around a third in the most recent seven day period (26 November to 2 of December): from 125 to 164 per 100,000 residents, respectively.
- Testing rates in Hackney continue to be lower compared to London and England averages: roughly 2,000 tests per 100,000 population were carried out between 26 November and 2 December in Hackney, compared to an average of 2,300 in London and 3,000 in England.
- Positivity rates have declined since the last week: currently the overall positivity rate for Hackney is 8.0% (2.5% in Pillar 1 and 11.0% in Pillar 2).

The City of London's COVID-19 incidence is currently higher than both the London and England average

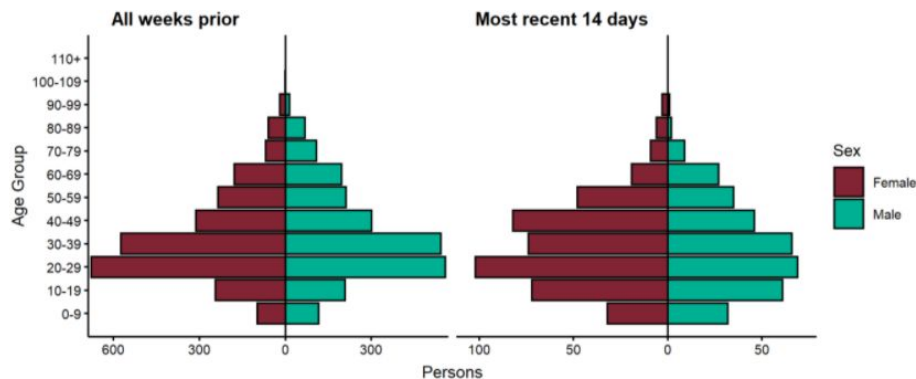
Incidence, testing and positivity rates in the City of London, by specimen date (May 5 to December 2 2020*)



- The City of London's COVID-19 incidence is currently higher than both the London and England average, though this is based on a small population size.
- While the City of London's testing rate is lower than the London and England average, a higher proportion of tests have returned positive results within the past week.
- In the latest seven day period of complete data (26 November to 2 December) the City of London recorded an incidence rate of 196 cases per 100,000 population, this has increased by 59% from the previous week (19 to 25 November) where 123 cases were recorded per 100,000 population.
- Roughly 2,000 tests per 100,000 population are being carried out each week in the City of London, compared to an average of 2,300 in London and 3,000 in England.
- Currently the overall positivity rate for the City of London is 6.9% (0.0% in Pillar 1 and 12.4% in Pillar 2).

Most cases in Hackney are now being diagnosed among the residents aged 20 to 40

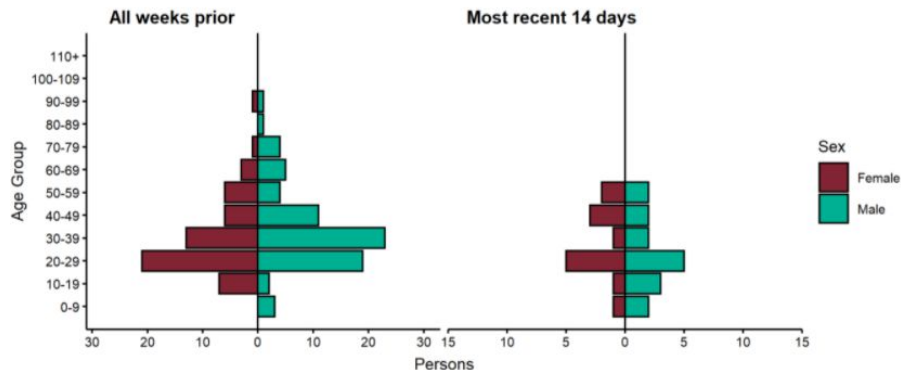
Age-sex pyramid for confirmed cases in Hackney in past 14 days (23 November to 6 December 2020) and all weeks prior



- While the most recent cases continue to be diagnosed among working ages, for both genders, the distribution between age groups has become more equal in recent weeks.
- Females aged 20-29 have recorded both the highest number of COVID-19 cases over the entire pandemic, as well as in the most recent fortnight (23 November to 6 December)
- All age groups recorded an increase COVID-19 incidence rates within the last week of complete data. Comparing the week 19 to 25 November with 26 November to 2 December:
 - 0 to 15 year olds: 93 vs 124 cases per 100,000
 - 16 to 29 year olds: 183 vs 234 cases per 100,000
 - 30 to 44 year olds: 106 vs 128 cases per 100,000
 - 45 to 64 year olds: 147 vs 214 cases per 100,000
 - 65+ year olds: 74 vs 111 cases per 100,000

The highest number of cases in the City of London are continuing to be recorded among younger working ages

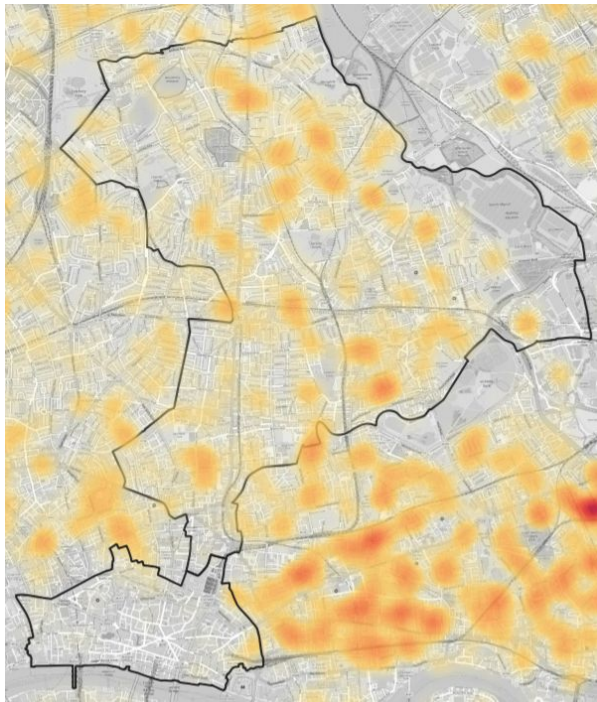
Age-sex pyramid for confirmed cases in the City of London in past 14 days (23 November to 6 December 2020) and all weeks prior



- The most recent cases continue to be diagnosed among younger working ages in the City of London for both males and females.
- 20-29 years olds have recorded some of the highest numbers of COVID-19 cases in all weeks since the beginning of this pandemic as well as in the most recent fortnight.
- These younger working age groups have also recorded the highest incidence rates in the latest week of complete data (26 November to 2 December), though these are based on small numbers:
 - 0 to 15 year olds: 134 cases per 100,000
 - 16 to 29 year olds: 359 cases per 100,000
 - 30 to 44 year olds: 272 cases per 100,000
 - 45 to 64 year olds: 159 cases per 100,000
 - 65+ year olds: 0 cases per 100,000

Differently from the picture in September, new Covid-19 cases are no longer concentrated in the north of Hackney

Distribution of COVID-19 cases in the City of London and Hackney between 22 November and 5 December

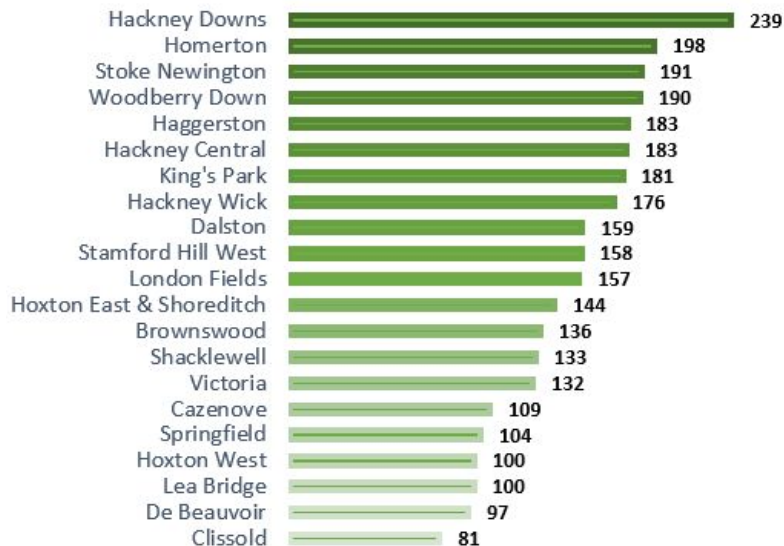


- Whereas in September and early October a high concentration of cases were recorded in the north of the borough, COVID-19 cases and clusters of COVID-19 cases are now spread relatively evenly across the borough.
- A significant proportion of cases are attributed to household clusters: in the fortnight between November 23 and December 6, 39% of cases were part of a household cluster compared to 29% for all weeks prior in Hackney. However, this is lower than the 42% recorded in the previous fortnight (9 to 22 November)
- The wards with the highest number of clusters in the most recent fortnight were:
 - Haggerston (12 clusters)
 - Stoke Newington and Homerton (both recorded 10 clusters)
 - Hackney Central, Hackney Wick, and Cazenove (all recorded 9 clusters)

Data source: Public Health England.

Some of the north Hackney wards are still showing relatively high incidence rates compared with the rest of the borough

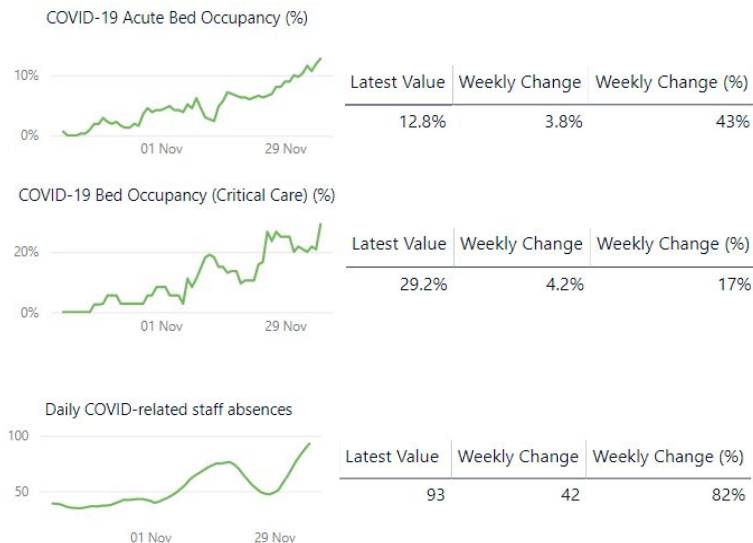
Rate of COVID-19 per 100,000 per week in most recent 7 day period with complete data (November 25 2020 to December 1 2020)



- Hackney Downs was the only ward to record over 200 cases of COVID-19 per 100,000 population in the latest week of complete data (25 November to 2 December).
- Within this time frame, all but two of Hackney wards recorded rates of 100 cases per 100,000 population or more, and 10 wards recorded rates over 150 cases per 100,000 population.
- Between 18 to 24 November and 25 November to 1 December two wards recorded significant increase in incidence rates:
 - Springfield: 40 vs 103 per 100,000 population
 - Stoke Newington: 98 vs 191

The number of beds occupied by COVID-19 patients in the Homerton hospital is continuing to increase

COVID-19 acute and critical care bed occupancy and staff absences at the Homerton Hospital, 10 October to 7 December 2020



As of 7 December, COVID-19 bed occupancy in the Homerton hospital is continuing to increase since mid-October; within the past week:

- Acute care bed occupancy increased by 43%
- Critical care bed occupancy has increased by 17%
- COVID-19 related staff absences have increased by 82% to 93 absences.
- A rise in hospital patients with COVID-19 as well as patients in the intensive care has been noted across the entire North East London.